

# Safeguarding Information

## Evening 3

Child Criminal Exploitation

# What Is A Gang?

## The Home Office definition:

- a group of people involved in violence as a gang if it:
- consists of at least three people; and,
- has one or more characteristics that enable its members to be identified by others as a group.
- Is associated with a particular area

## Essex Police Op Raptor definition:

- A durable, predominantly street based group of young people who see themselves (and seen by others) as a discernible group who *engage in criminality and violence and/or:*
- Identify with or lay *claim over territory*, have some form of *identifying structure*, and are *in conflict with other similar gangs*



Sense of belonging

Absence of family/unstable home life

Little or no access to social activities/opportunities

**What is the  
'Attraction'**

Protection

Emotional support

Identity

Respect/Status

Economic deprivation/Poverty

Pressure to join

Fear/Threats

"Attractive"

Financial gain/gifts



# Grooming Process



Gangs prey on the vulnerable



Promise of reward



Loyalty



Reprisals



Isolation





Source: YouTube

**Paul Mckenzie interviews drug dealer who targets the youth to sell their drugs**







Behaviours





## The Risks



Being part of a gang puts children and young adults at significant risk of:

Committing crime resulting in a criminal  
record/custodial sentence

Being trafficked and a victim of forced  
labour

Serious violence and/or  
Death

Debt bondage

Dealing and/or taking drugs

# Gang Structure







Beef



Push/Pusher

Going Cunch/Country



Feds

Pea/Lizzies



Bora/Dipper



Tec

# Terminology

Slipping



Food



Box

Bali/  
Bally



Whip



# What is A County Line?



## Home Office Definition:

The term county lines refers to urban gangs supplying drugs to suburban areas, as well as market and coastal towns, by using dedicated mobile phone lines or “deal lines”





Branding



Trafficking/  
Modern Day  
Slavery



'Day Tripping'

'Holidaymakers'

Prep & Distribution



## Methods

Exploitation



Criminal Activity







Missing



Excessive calls and texts



Rewards

Relationships with groups  
and/or individuals



Changes in behaviour  
and well being



Weapons

Possibly travelling out of  
the county



Unexplained injuries

Signs

# The Impact Of Covid-19

Gangs have had to adapt their 'business model'



Posing as key workers and delivery drivers to remain undetected

Fewer children being sent from cities and switching to 'using' local children to run and deal drugs





# The Impact Of Covid-19



Increase in children and young adults being groomed and recruited online via social media and gaming apps

Drug gangs need a base to deal their drugs. Gangs have been forced to move away from hotels and b&bs and have moved in to more residential areas.



This has resulted in increased cases of Cuckooing



# '80 Mins Via Snapchat'

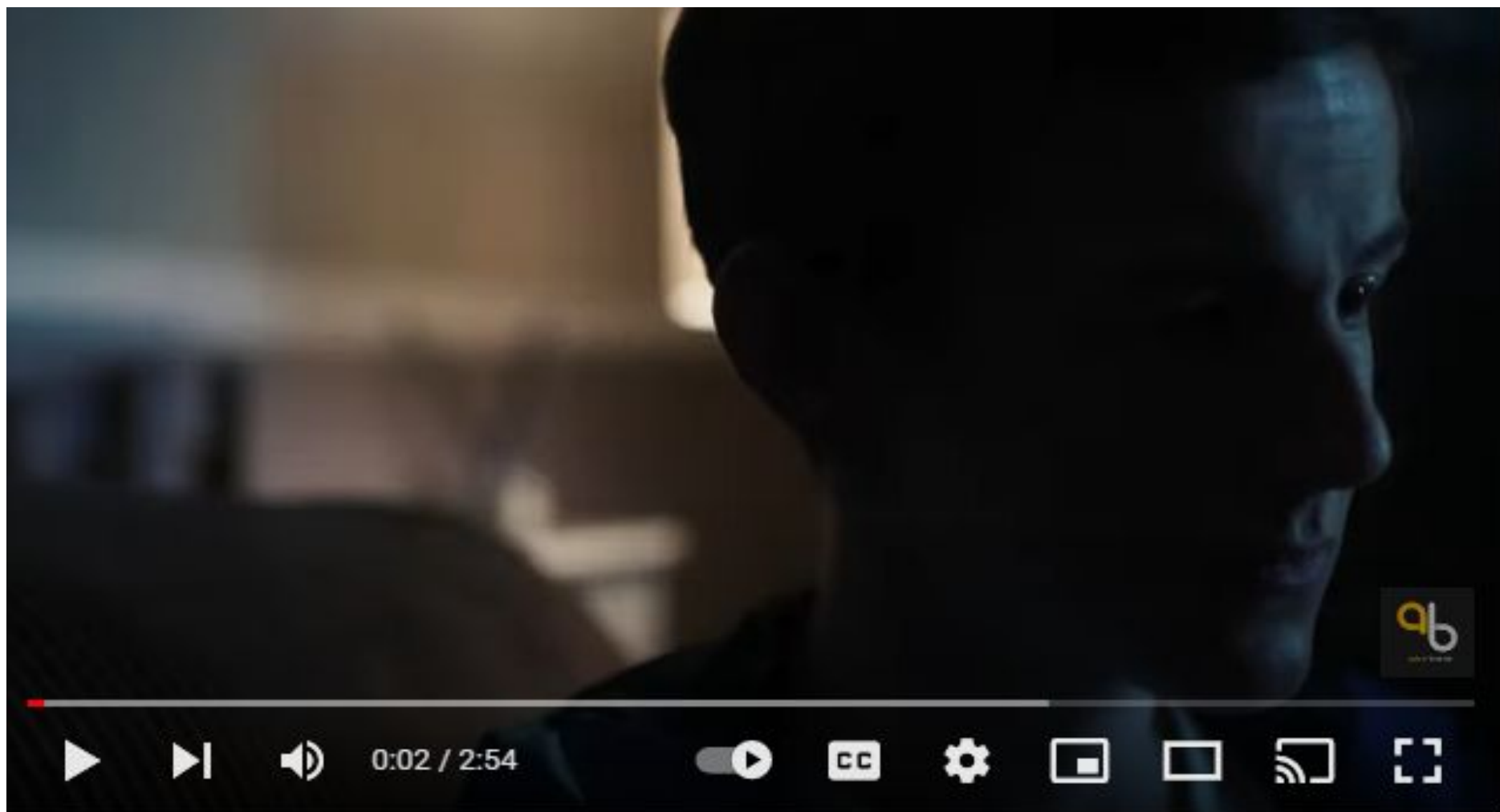


A vulnerable 14 year old male was targeted, groomed and recruited via SnapChat by a criminal gang

Within 80 mins a gang collected him and drove him elsewhere to sell drugs



Sold drugs to drugs users with each batch worth £480 and dealt five batches a day



# What is Cuckooing?



Cuckooing is when gangs move into a rural or suburban area for a short time, take over the home of a vulnerable person where they can then set up a base in order to deal drugs.





Offer of gifts, to pay bills and 'free drugs'



## Methods

Access to numerous addresses

Eviction and Homelessness



Exploitation



Intimidation and Threats



Signs of prepping drugs  
and drug use



Increase of visitors



Curtains always closed



Lean/Purple Drank



Signs

Disengagement from  
services



Increase in litter



Anti-social behaviour



Push bikes and vehicles





# Emerging Trends



Females being targeted, groomed and exploited online for exploitation and cuckooing



DatingDirect.com

Families of exploited children and young people are being targeted at their homes in order to settle debts





# Emerging Trends

Met Police issue warning over illegal gummies containing synthetic cannabis after 23-year-old dies



## Essex Seizures



- 1 Cannabis edible can be equivalent to smoking 1 full cannabis joint
- When smoking cannabis, the effects are almost instant (15 seconds - 1 minute)

Edibles usually take between 45 minutes – 2 hours to enter the bloodstream and take effect

- They take more because of this = overdose



# Drill Music



- American origin, developed in 2012 in South London
- Dark/violent content
- Can be used to bait and retaliate against other gangs/rivals
- Masks/Disguises commonly worn
- Will display wealth to give the impression money is no object





# Girls and Gangs

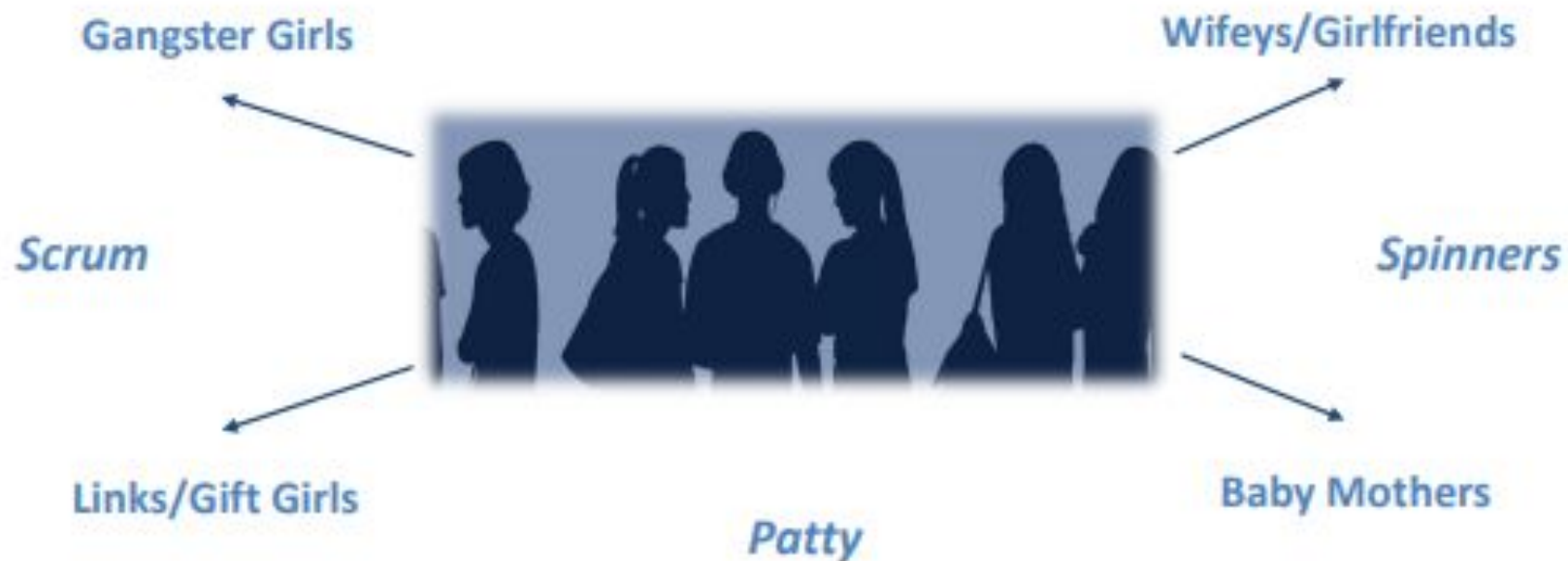
## Attraction

- Low self-esteem
- Respect/reputation
- Attracted to the 'bad boy' image of male gang members
- Excitement, financial benefits, gifts
- Empowerment

## Risks

- Sexual exploitation/abuse/violence
- Used and forced into sex
- Humiliation
- Believe that the relationship they are in is 'genuine'
- Domestic abuse/violence
- Forced to carry weapons/drugs/money

# Girls and Gangs - Structure



<https://crimestoppers-uk.org/fearless/more-info/youth-support-services>



[Home](#) > [More info](#) > Youth support services

## Youth support services

✓ [General Support Services](#)

✓ [Child Financial Exploitation Support Services](#)

✓ [County Lines Support Services](#)

✓ [Drugs Support Services](#)

✓ [Hate Crime Support Services](#)

✓ [Healthy Relationships Support Services](#)

✓ [Knife Crime Support Services](#)

We are here to help and support as much as we can. If you have any concerns please contact your **Year office** or a **Safeguarding Lead**

- Mrs Wadsworth (Deputy Headteacher & Safeguarding Lead)
- Mr Johnson (Deputy Headteachers & Deputy Safeguarding Lead)
- Mr Baidoo (Assistant Headteacher & Deputy Safeguarding Lead)
- Mr MacPhail (Senior Progress Leader & Deputy Safeguarding Lead)

You can also contact 101 or if someone is in immediate danger 999

**Thank you for listening**