



The **Stanway** School



September 2024 Information Booklet  
**Year 8**

# 1. Introduction

As the Summer holidays draw to a close and we look ahead to the start of the new academic year we wanted to produce a September Information Booklet for parents and carers. This one is tailored for your child's particular year group and we recommend that you go through the booklet with them before the Summer holidays and during the first week of September to ensure they are ready for the new academic year. It is always worth going through the uniform expectations with them, especially around jewellery, to prevent any issues on their return to school.

This booklet contains key information that will be relevant for your child, both regarding the general day-to-day elements of school life and specific details to help them navigate the year successfully. We will also be holding a **Navigating Success Evening on 2nd of October 2024 5pm - 7pm** where you will be able to meet the Head of Year and your child's tutor.

We are committed to building positive working relationships between home and school, to this end this booklet contains the contact details of different members of staff and the table below also indicates the areas of responsibility that each member of the Senior Leadership Team holds. If you have any questions, we would be happy to help you!

The main contact for your child will be their form tutor. Please feel free to contact them should you have any concerns, queries or just want to share some achievements that your child has made, especially over the summer holidays.

<b>Mr J Bland</b>	Executive Headteacher	Strategic direction & School Improvement <a href="mailto:jonathan.bland@stanway.school">jonathan.bland@stanway.school</a>
<b>Mr J Player</b>	Head of School	Strategic Direction & School Organisation <a href="mailto:john.player@stanway.school">john.player@stanway.school</a>
<b>Mrs R Braniff</b>	Deputy Headteacher	Quality of Education <a href="mailto:rachel.braniff@stanway.school">rachel.braniff@stanway.school</a>
<b>Mrs S Jaggard</b>	Deputy Headteacher	Inclusion <a href="mailto:sarah-jane.jaggard@stanway.school">sarah-jane.jaggard@stanway.school</a>
<b>Mrs C Wadsworth</b>	Deputy Headteacher	Pastoral and safeguarding lead <a href="mailto:crystal.wadsworth@stanway.school">crystal.wadsworth@stanway.school</a>

<b>Mrs L Allen</b>	Assistant Headteacher	SENCO <a href="mailto:lizzie.allen@stanway.school">lizzie.allen@stanway.school</a>
<b>Mr N Baidoo</b>	Assistant Headteacher	Pastoral KS3 (Years 7, 8 & 9) <a href="mailto:nik.baidoo@stanway.school">nik.baidoo@stanway.school</a>
<b>Ms L Doherty</b>	Assistant Headteacher	Pastoral KS4 (Years 10 & 11) <a href="mailto:louise.doherty@stanway.school">louise.doherty@stanway.school</a>
<b>Mr R Stuart</b>	Assistant Headteacher	Data & Timetable <a href="mailto:richard.stuart@stanway.school">richard.stuart@stanway.school</a>

<b>Mr R Thorpe</b>	Sigma Trust Strategic Lead for MFL	Sigma Trust Strategic Lead for MFL <a href="mailto:ross.thorpe@stanway.school">ross.thorpe@stanway.school</a>
--------------------	------------------------------------	------------------------------------------------------------------------------------------------------------------

<b>Mrs S Cooper</b>	Senior Progress Leader	Data & Reporting <a href="mailto:sarah.cooper@stanway.school">sarah.cooper@stanway.school</a>
<b>Mr A James</b>	Senior Progress Leader	Key Stage 3 (Years 7, 8 & 9) <a href="mailto:anthony.james@stanway.school">anthony.james@stanway.school</a>
<b>Mr A MacPhail</b>	Senior Progress Leader	Key Stage 4 (Years 10 & 11) <a href="mailto:alexander.macphail@stanway.school">alexander.macphail@stanway.school</a>
<b>Mrs R Reilly</b>	Senior Progress Leader	Student Wellbeing <a href="mailto:rebecca.reilly1@stanway.school">rebecca.reilly1@stanway.school</a>
<b>Mrs M Ridgwell</b>	Senior Progress Leader	Mathematics & Numeracy <a href="mailto:megan.ridgwell@stanway.school">megan.ridgwell@stanway.school</a>
<b>Mrs C Spurr</b>	Senior Progress Leader	Teaching & Learning <a href="mailto:charlotte.spurr@stanway.school">charlotte.spurr@stanway.school</a>
<b>Miss C Whittle</b>	Senior Progress Leader	English & Literacy <a href="mailto:chloe.whittle@stanway.school">chloe.whittle@stanway.school</a>

## 2. Our school culture

The Stanway School is a member of Sigma Trust, a partnership of schools located in North East Essex covering both Colchester and Tendring. It incorporates schools that share the same mission, vision and values and have a strong history of working collaboratively.

Together, the staff and students formed the 5 elements of the Stanway Standard that run through and underpin all that we do and say in our school community. At The Stanway School, we are:

**Considerate:** we are a community where each member is valued and success is celebrated

**Responsible:** we are each responsible for our words and actions towards each other and our environment

**Proud:** we are proud to be part of the Stanway community and take pride in the quality of our work, our achievements and our uniform

**Respectful:** we treat every member of our community with the respect we wish to be shown to ourselves

**Determined:** we show resilience through challenges and aspire to be the best we can be



Alongside the Stanway Standard, we run a RESPECT agenda to ensure that all members of our school community are treated in the way that we would expect. This agenda was designed through a collaboration between the students and staff and is a fundamental principle we uphold.

Collectively, these embody the community culture we expect at the Stanway School. Our rewards structure and behaviour and consequence system are built around these principles.

A big focus for us is ensuring all members of our school community demonstrate appropriate manners, built on a foundation of **RESPECT**. These work alongside our 'Stanway Standards' and ensure that all students and staff are treated respectfully, with consideration and kindness to each other.

All students are expected to show these in all their interactions, within lessons and outside of them.

### **Responsible - accepting consequences for what we do and say**

- At Stanway we are responsible for the language we use when talking to adults
- At Stanway, we are responsible for the language we use when talking to students.
- At Stanway we are responsible for the way we move about the site

**Engaged** - *being actively involved in something*

- At Stanway, we are engaged in learning
- At Stanway, we are engaged when talking to others
- At Stanway we are engaged when being talked to by adults

**Sensible** - *having good sense and reason*

- At Stanway we are sensible when moving around the school site
- At Stanway, we are sensible in queues
- At Stanway we are sensible in lessons

**Polite** - *showing behaviour that is respectful and courteous*

- At Stanway, we are polite in conversations and comments
- At Stanway, we are polite in the way we interact with each other
- At Stanway, we are polite to visitors to the school

**Empathic** - *sensing others' emotions and trying to imagine how others' feel*

- At Stanway, we show empathy by considering how other people feel
- At Stanway, we show empathy by considering words we use to describe other people
- At Stanway, we show empathy by considering comments we make, even if they are intended as jokes

**Co-operative** - *working towards a common goal*

- At Stanway, we are co-operative by working well with other students
- At Stanway, we are co-operative by working well with adults
- At Stanway, we are co-operative by helping each other through difficult times

**Thoughtful** - *having thought for the comfort and good of others*

- At Stanway, we are thoughtful in our words towards others
- At Stanway, we are thoughtful in our actions towards others
- At Stanway, we are thoughtful in the way we conduct ourselves on social media

### 3. The House System

When students start Stanway School, their form group will be linked to a House. We have five houses named after famous people who have made a massive contribution to their field of study - literature, science and medicine. Each house has their own representative colour.

Over the school year there will be the opportunity to become involved in house events. These events are run by all departments so there is always something for everyone - Art, Maths, Languages, PE, Science, DT, STEM, Humanities to name a few. Participation in House competitions results in Standard Points for you. Results house events are celebrated at House assemblies each term.

Each house has a student leader attached to them and they are part of our Student Leadership Team



#### **Gainsborough:**

**Head of House: Mrs Spurr**

Named after Thomas Gainsborough, the famous local portrait and landscape artist, born in Sudbury, Suffolk in 1727, and one of the original three Houses here at Stanway.



#### **Nightingale:**

**Head of House: Miss Johnson**

The Nightingale house has been established since the 2017/18 academic year and is named after one of England's most inspiring women in history – Florence Nightingale (The “Lady with the Lamp”).



#### **Rutherford:**

**Head of House: Mr Johnson**

Rutherford House is named after the famous scientist Ernest Rutherford who was known as the father of nuclear physics and was awarded the Nobel Prize for Chemistry in 1908.



#### **Shakespeare:**

**Head of House: Mr Evans**

Shakespeare House is one of the original three Houses at Stanway, formed in 2001 and is named after the famous poet, playwright and actor, William Shakespeare.



#### **Wellington:**

**Head of House: Miss Parker**

Named after perhaps Britain's greatest military hero and the victorious General from the Battle of Waterloo in 1815, the 'Iron Duke' is also one of the three original Houses at Stanway.

# 4. The School Year and key dates

## The Stanway School – Term dates 2024-2025

September 2024							October 2024							November 2024							December 2024						
M	T	W	T	F	S	S	M	T	W	T	F	S	S	M	T	W	T	F	S	S	M	T	W	T	F	S	S
						1		1	2	3	4	5	6					1	2	3							1
2	3	4	5	6	7	8	7	8	9	10	11	12	13	4	5	6	7	8	9	10	2	3	4	5	6	7	8
9	10	11	12	13	14	15	14	15	16	17	18	19	20	11	12	13	14	15	16	17	9	10	11	12	13	14	15
16	17	18	19	20	21	22	21	22	23	24	25	26	27	18	19	20	21	22	23	24	16	17	18	19	20	21	22
23	24	25	26	27	28	29	28	29	30	31				25	26	27	28	29	30	23	24	25	26	27	28	29	
30																					30	31					
January 2025							February 2025							March 2025							April 2025						
M	T	W	T	F	S	S	M	T	W	T	F	S	S	M	T	W	T	F	S	S	M	T	W	T	F	S	S
		1	2	3	4	5						1	2						1	2		1	2	3	4	5	6
6	7	8	9	10	11	12	3	4	5	6	7	8	9	3	4	5	6	7	8	9	7	8	9	10	11	12	13
13	14	15	16	17	18	19	10	11	12	13	14	15	16	10	11	12	13	14	15	16	14	15	16	17	18	19	20
20	21	22	23	24	25	26	17	18	19	20	21	22	23	17	18	19	20	21	22	23	21	22	23	24	25	26	27
27	28	29	30	31			24	25	26	27	28			24	25	26	27	28	29	30	28	29	30				
														31													
May 2025							June 2025							July 2025							August 2025						
M	T	W	T	F	S	S	M	T	W	T	F	S	S	M	T	W	T	F	S	S	M	T	W	T	F	S	S
			1	2	3	4						1		1	2	3	4	5	6					1	2	3	
5	6	7	8	9	10	11	2	3	4	5	6	7	8	7	8	9	10	11	12	13	4	5	6	7	8	9	10
12	13	14	15	16	17	18	9	10	11	12	13	14	15	14	15	16	17	18	19	20	11	12	13	14	15	16	17
19	20	21	22	23	24	25	16	17	18	19	20	21	22	21	22	23	24	25	26	27	18	19	20	21	22	23	24
26	27	28	29	30	31		23	24	25	26	27	28	29	28	29	30	31				25	26	27	28	29	30	31
							30																				

- = Schooldays
- = School holidays
- = Bank holidays
- = Weekends
- = INSET

In addition, schools allocate five non-pupil days out of the school days indicated, or the equivalent in disaggregated twilight sessions.

<b>Autumn Term:</b>	Monday 2 September 2024 – Friday 20 December 2024 <i>Half Term 28 October – 1 November</i>	75 days
<b>Spring Term:</b>	Monday 6 January 2025 – Friday 4 April 2025 <i>Half Term 17 February - 21 February</i>	60 days
<b>Summer Term:</b>	Tuesday 22 April 2025 – Tuesday 22 July 2025 <i>Half Term 26 May – 30 May, and May Bank Holiday - 5 May</i>	60 days
		<u>195 days</u>

### Important dates for Year 8:

- 17th October - School Photographs
- 24th April - Yr 8 Parents Evening

## 5. Uniform

School uniforms play a key role in promoting pride, self-confidence and a feeling of belonging within the student community. We want our students to look smart and feel proud to be a student at The Stanway School; wearing their uniform correctly is vital in achieving this.

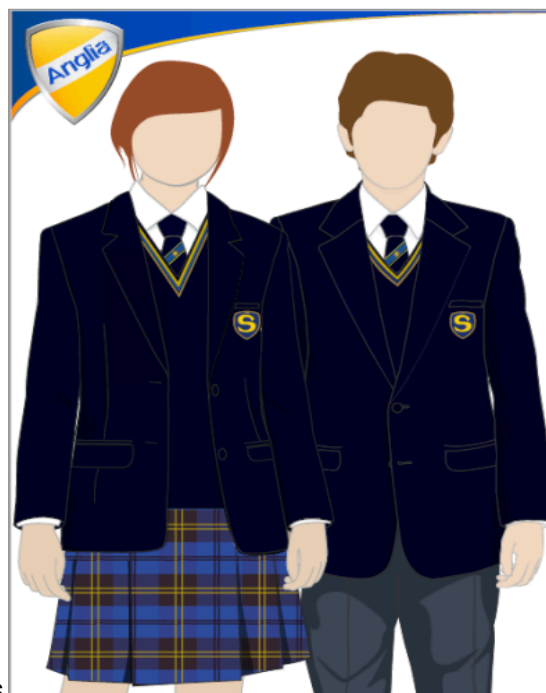
<u>Uniform</u>	<u>PE Kit</u>
<ul style="list-style-type: none"> <li>• Stanway School Navy Blazer *</li> <li>• Mid Grey, formal style trousers, or</li> <li>• Stanway School navy blue tartan skirt, knee length *</li> <li>• Stanway School clip on tie *</li> <li>• Stanway School navy V-neck jumper (optional) *</li> <li>• White shirt, traditional short or long sleeved</li> <li>• Plain black ankle socks or</li> <li>• Plain black tights</li> <li>• Plain flat formal black shoes</li> </ul>	<ul style="list-style-type: none"> <li>• Stanway School navy shirt*</li> <li>• Stanway School navy shorts *</li> <li>• Stanway School sports socks *</li> <li>• Stanway School long sleeves sports jersey *</li> <li>• Training shoes</li> <li>• Football boots (optional)</li> <li>• Footwear for 3G pitch – moulded studs, plastic studs or astro turf trainers</li> </ul>

\* These items of uniform are embroidered with the school logo and can only be purchased on-line from [www.yourschoolwear.co.uk](http://www.yourschoolwear.co.uk). Other items of school uniform, i.e. trousers/shirts, can be purchased from any uniform supplier.

School uniforms must be worn correctly at all times. All clothing should be clean, smart and marked with the student's name.

**Important notices - Please see the School Uniform Guidance Sheet for full information in our Uniform Policy available on the Stanway School website.**

- TROUSERS - must be mid-grey and formal style with a standard waistband that includes belt-loops and a standard hook and eye or button closure.
- SKIRTS - must be worn at or below the knee (approximately 5cm from the kneecap as a reference).
- SHIRTS - must have a standard collar and white buttons and must be buttoned to the neck and tucked into trousers or skirts at all times.
- JUMPER - Only the optional school jumper is permitted to be worn. Other garments, e.g. cardigans, sweatshirts, hooded tops, coloured jumpers are not acceptable.
- SOCKS - black or white ankle socks, knee high socks are not permitted.
- SHOES - must be entirely leather, faux leather or patent leather. Brogues, Oxfords, Loafers and Monk Straps are recommended. Trainer-style shoes, high heels or boots are not acceptable, nor are shoes which display logos or other adornments.
- HAIR - extreme hair-cuts and colours are not allowed, including extreme highlighting. Hair should be a natural colour with no extremes in style eg shaved patterns or shaved lines. All hair adornments must be discreet. Caps or beanie hats may not be worn in school.
- JEWELLERY - for health and safety reasons, jewellery is limited to a wristwatch, a medical bracelet or medical necklace (if needed) and one spherical gold or silver small stud in each ear,





and a wristwatch. No chains, tongue studs or visible body piercings/tattoos are permitted. Clear plastic nose retainers can be worn.

- All jewellery, including earrings and clear retainers, must be removed for PE.
- MAKE UP - make-up should be very discreet. Nail varnish, acrylic nails and false eye lashes are not acceptable.

Reasonable adjustments to uniform may be made for religious or (upon presentation of medical evidence) medical reasons and only then, following discussion with the Executive Headteacher / Head of School.

**Trainers** are not permitted other than in PE lessons. We understand that there are occasions when there is a short term need to wear alternative shoes and in these instances please contact the year team who will be able to provide the student with a permission card to show when challenged. Students in trainers without a card will have a consequence set.

We know that some families can struggle financially with school uniform and we want to help where we can. We have a stock of second hand uniform that can be used to help if you are struggling to purchase what is needed, this includes school shoes should students break theirs and you are unable to purchase new ones. **We would welcome any donations of old uniform and PE kits that you no longer require so that they can go to help another family.** Please contact your child tutor if you have any concerns over uniform.

Students who do not meet the uniform expectations will have their standards card signed. The purpose of this card is to prevent students from gaining negative behaviour points on each occasion where they are not meeting the uniform standards. Instead, their card will be signed and a consequence will only be given when they receive an allocated number of signatures. We believe this will give students the opportunity to get back into the habit of wearing the uniform correctly before any consequences are issued.

## 6. The School Day

Each day has 5 lessons that are each 1 hour long. Alongside this, students have an AM registration session every day. In these registration sessions, students conduct a range of activities across the week, including a Year Group or House Assembly, PSHE sessions, Votes for Schools and Literacy programmes.

During lunchtimes, a number of clubs and support sessions are run, with a very broad spectrum of interests being catered for, from music, drama and sports all the way to Amnesty International, Debating and even Dungeons & Dragons!

8.40am - 9.05am	Morning Registration/Assembly
9.05am - 10.05am	Lesson 1
10.05am - 11.05am	Lesson 2
11.05am - 11.30am	BREAK
11.30am - 12.30pm	Lesson 3
12.30am - 1.30pm	Lesson 4
1.30pm - 2.10pm	LUNCH
2.10pm - 3.10pm	Lesson 5

### Mobile Phones

As a quick reminder, students are not allowed to use their mobile phones during the school day (8:40am - 3.15pm). During these times, it should be switched off and kept safely away in blazers or school bags. If a student's phone is seen or heard during these hours, it will be confiscated and given to their Head of Year for collection at the end of the school day.

## 7. Medical Matters

We have a number of staff trained as first aiders who supervise the school Medical Room during school hours. If your child has an accident or is unwell during school, they will be seen by a trained first aider. We cannot "treat" injuries or illness. First aiders are not able to diagnose any illness or ailments and you should see your GP for any diagnosis of any medical condition. Our role is to take reasonable care of all students and you will be contacted if we feel a student cannot remain in school. In the event of an emergency, an ambulance may be called.

Students should not use their mobile phones to contact a parent or carer directly to ask them to come into school to pick them up. Whilst this is understandable, it is also very damaging, as it can undermine the ability of the school to effectively care for students during the school day, and can also put students at risk as the school must know where students are at all times.

### Medication

If your child has any medical condition of which we are unaware, please ensure that we are informed via your child's Year team / school admin. Small quantities of their medication may be brought into school as necessary. If parents require us to administer medication they must hand it in, in person at Reception in order that the necessary paperwork may be completed. Prescribed medication should be in the box it has been issued in from the pharmacist clearly stating name and dosage. Any other medication e.g. paracetamol must be in the original packaging. The school cannot take responsibility for 'out of date' medication.

## 8. Student Absence

### The importance of good attendance

Good attendance is critical to student success and wellbeing and students should be aiming for a **target attendance of 97%** over the academic year. Nationally, Year 11 students who missed less than 1% of school achieved nearly a full grade higher than the average student per GCSE last year. Those students whose attendance was below 90% achieved on average a third grade per GCSE lower than the average student.

Although 90% sounds like a high number but in attendance terms it is not. It means that a student misses a day of school every two weeks or 20 days of school (100 hours). Students with an attendance below 90% are classified as persistently absent.

### How To Report An Absence

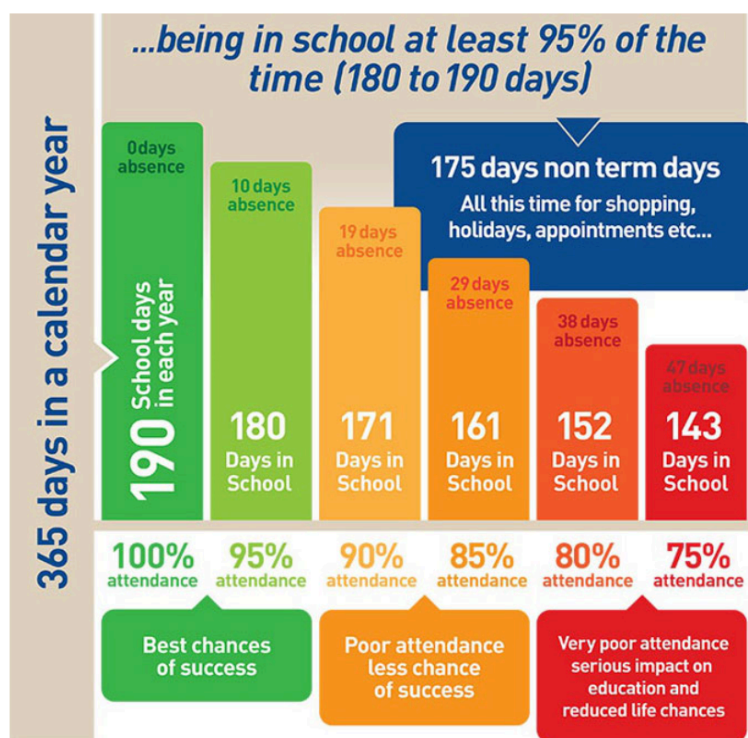
All absences should be reported to school as early as possible on the first day of absence either by telephoning the school absence line on 01206 245059 or via email to [student.absence@stanway.school](mailto:student.absence@stanway.school).

If only one day's absence has occurred, then a phone call/email is sufficient. However, if your child is likely to be absent for more than one day, then a phone call/email to the school should be made on the first day informing us of the expected return to school date. If we do not receive a call from you, one of our office staff will message you to gain an update during the school day.

Authorised absence is granted entirely at the headteacher's discretion and absences will be unauthorised if the school is not satisfied that the reason given is an authorised absence. Medical evidence may be requested.

There is no entitlement to parents to take their child out of school during term time. However, you may apply to the school for leave of absence if you believe there are exceptional circumstances.

If the absence is not authorised and the holiday is taken, the case will be referred to the Education Welfare Service who may issue a Penalty Notice for £120 (or £60 if paid within 21 days) to each parent for each child taken out of school.



## 9. Free School Meals

### **Who is eligible for free school meals?**

Free school meals are available to pupils in receipt of, or whose parents are in receipt of, one or more of the following benefits:

- Universal Credit (provided you have an annual net earned income of no more than £7,400, as assessed by earnings from up to three of your most recent assessment periods)
- Income Support
- Income-based Jobseeker's Allowance
- Income-related Employment and Support Allowance
- Support under Part VI of the Immigration and Asylum Act 1999
- The guarantee element of Pension Credit
- Child Tax Credit (provided you're not also entitled to Working Tax Credit and have an annual gross income of no more than £16,190)
- Working Tax Credit run-on – paid for four weeks after you stop qualifying for Working Tax Credit.

### **Will my child have a choice of foods?**

There will be a daily hot and cold meal deal available as well as free choice on other items to the allocated value.

### **Will my child stand out from their friends?**

No, there is no visible exchange of token or voucher that takes place. As we use biometrics for purchasing through Parent Pay the purchase of food items will be done in the same way. The Free School Meal balance will be added to your child's Parent Pay account daily. You will be able to see what your child is eating through Parent Pay.

### **How do I find out if my child is eligible for Free School Meals?**

It is a simple and easy process.

Use this link to find out if you are eligible for Free School Meals:

[Apply for free school meals - GOV.UK \(www.gov.uk\)](https://www.gov.uk/apply-for-free-school-meals)

## 10. Personal Details

It is important that we have up to date contact details for your child and for the emergency contacts that you have provided. If you would like to make any updates or changes please login to Arbor ([Link here](#)) or contact the school office:

# 11. Pastoral Support & Safeguarding

Form tutors should be the first point of contact for all pastoral concerns as they have daily contact with your child.

For serious safeguarding concerns please inform the year team directly. Mr Buckman is the Head of Year 8 and can be contacted via email on [guy.buckman@stanway.school](mailto:guy.buckman@stanway.school). Mrs Gentry and Mrs Collins are the joint Assistant heads of Year 8 and her email address is [zoe.gentry@stanway.school](mailto:zoe.gentry@stanway.school) and [laura.collins@stanway.school](mailto:laura.collins@stanway.school).

The pastoral team is lead by Mrs Wadsworth, Deputy Headteacher and Designated Safeguarding Lead and supported by the deputy safeguarding leads; Mr Baidoo (Assistant Headteacher), Ms Doherty (Assistant Headteacher), Mr MacPhail (Senior Progress Leader KS4), Mr James (Senior Progress Leader KS3) and Mrs Reilly (Mental Health and Wellbeing Leader).

We send home a safeguarding and online safety newsletter each half term and would encourage you to read this as it often contains updates on new trends, concerns and specific information regarding current safeguarding concerns in the area.

Form Group	Tutor	Email
8S1	Mr Goldsmith	<a href="mailto:daniel.goldsmith@stanway.school">daniel.goldsmith@stanway.school</a>
8S2	Mrs Luther	<a href="mailto:cathy.luther@stanway.school">cathy.luther@stanway.school</a>
8W1	Mrs Higgon	<a href="mailto:joanne.higgon@stanway.school">joanne.higgon@stanway.school</a>
8W2	Mr Wilkinson	<a href="mailto:stuart.wilkinson@stanway.school">stuart.wilkinson@stanway.school</a>
8R1	Mrs King	<a href="mailto:laura.king@stanway.school">laura.king@stanway.school</a>
8R2	Mr Russell	<a href="mailto:jonathan.russell@stanway.school">jonathan.russell@stanway.school</a>
8N1	Mr Halford-Pollard	<a href="mailto:james.pollard@stanway.school">james.pollard@stanway.school</a>
8N2	Miss Black	<a href="mailto:katie.black@stanway.school">katie.black@stanway.school</a>
8G1	Mrs Eves	<a href="mailto:carly.eves@stanway.school">carly.eves@stanway.school</a>
8G2	Mr Deighton	<a href="mailto:james.deighton@stanway.school">james.deighton@stanway.school</a>

**Mental Health** is one of the most common safeguarding concerns we currently find among students and due to the increasing demand nationally, external support such as CAMHS (Children and Adolescent Mental Health Service) and counselling can have long waiting times. We encourage those that have concerns about mental health to talk to their tutor and more practical support can be found via the school website wellbeing page, [LINK HERE](#).

# 12. The Curriculum

## **Curriculum Maps and Topics being studied**

A full breakdown of our curriculum is available on our website at the following location: [The Stanway School - Curriculum](#). This page will be updated to reflect any changes that occur during the year, but does give you a good overview of what your child will be studying.

1	2	3	4	5	6	7	8	9	10	11	12	13	14	15	16	17	18	19	20	21	22	23	24	25
English							Mathematics							Science						Physical Education				
26	27	28	29	30	31	32	33	34	35	36	37	38	39	40	41	42	43	44	45	46	47	48	49	50
Religious Education		Citizenship		History			Geography			Languages				Computer Science		Art		Drama		Music		Design & Technology		



At The Stanway School we believe that learning goes beyond the classroom. We have adapted a traditional model of school homework to meet our aim of instilling a love of learning and developing independence.

Year 10 and 11 - Tasks will be set weekly and with a week for completion) as and when appropriate. This will be determined by the subject leader and the content is adapted by the class teacher.

In Year 7, 8 and 9 subjects will provide a menu of tasks for each pupil to select a task from. The teacher will talk to the students about the tasks so they ensure they understand what they should do. They will also guide some pupils towards particular tasks to ensure the tasks either support, secure or stretch their learning.

English, Mathematics, Science and Languages will set a task weekly.

# 13. Assessments and Reporting

## **Assessments**

Throughout the year, our teachers will assess the progress students are making in all of their subjects to ensure that they are making at least the expected progress needed at each point on their learning journey. To help our students make progress, teachers will provide clear feedback on the specific skills, knowledge and concepts that they have demonstrated, as well as what areas specifically they need to focus on next to make further progress. Every term, teachers will also assess the students' attitude to learning in all the subjects they are studying. This information is available in Go4schools.

## **What should I do if I am concerned about my son's/daughter's progress in a particular subject?**

Talk to your son/daughter to check that they are aware of what they need to do to make progress in the subject. Are they following the guidance from their teacher on how they need to improve? Have they spoken to the teacher to help them set a realistic target to improve? If you have further concerns please speak to the relevant Subject Lead / Head of Department (contact details are available on our website through the Contact Us page).

# 14. Reading

## The Importance of reading

At The Stanway School, we believe in the power of reading. We understand that becoming a confident reader unlocks all subjects in our curriculum and helps students to succeed beyond school. Regular reading has a number of benefits:

1 minute a day: Students will encounter 180 words per school year.

5 minutes a day: 282,000 words per school year.

20 minutes a day: 1,800,000 words per school year and likely to score in the top 90% of standardised tests.

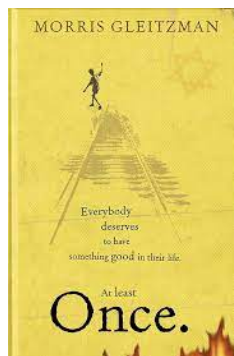
All students from Year 7 to Year 10 will be expected to complete reading homework. This will be set via the Sparx Reader platform. Sparx Reader is a reading, comprehension and vocabulary programme that gets all young people reading regularly to help improve their literacy. It also aims to motivate students to read for pleasure.

## Form Time Novels

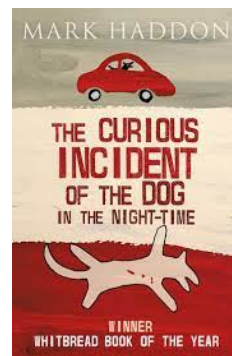
Reading is prioritised at The Stanway School through form time. Our students enjoy dedicated reading time with their tutor with a form time novel. Each text is carefully selected to encourage curious and confident readers. Whilst each text is different, they are united by common themes of tolerance and diversity.



Year 7



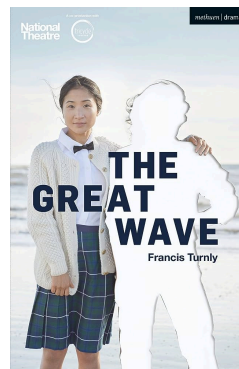
Year 8



Year 9



Year 10



Year 10

## The Learning Resource Centre

We believe there is no such thing as a student who doesn't like reading - they just haven't found the right book yet! The Stanway School has a very well-stocked library to cater for all our students,

including great series, graphic novels, magazines and 'You Choose' stories. We want to inspire our students to read widely and develop their imaginations by getting lost in a great book. As part of their English lessons, all students in years 7-9 will have a lesson in the LRC and can access the LRC during breaks and lunches.

### **Building Confident Readers**

To support all students to be able to read at age related expectations, we run a number of reading interventions. This includes small group fluency sessions and more targeted 1:1 reading support. Our academic prefects are trained to 'buddy' with a younger student and read together to build confidence and develop comprehension skills.

## 15. SEND Support

### Key People & How To Contact Them

If you have any SEN related queries throughout the year, the SEND department can be contacted via [senteam@stanway.school](mailto:senteam@stanway.school). The department endeavours to respond to all queries within 48 hours.

SENCO - Miss Allen (Whole school responsibility and oversight of year 11)

Deputy SENCO Mr Hazell (oversight of year 7 & 8)

Deputy SENCO Mrs Keliher (oversight of year 9 & 10)

SEND department coordinator Sharon Roberts

SEND administrator Mrs Phillips

### **Our Vision**

The School is committed to providing all students with full access to a common, balanced and differentiated curriculum regardless of ability or need. As part of this commitment, the SEN Team aims to accurately identify, assess students with special educational needs and provide support strategies to enable staff to meet the needs of these students across the curriculum.

The School accepts the notion that meeting special needs is a whole school responsibility. This means that whilst the Learning Support Team identifies, assesses and provides additional help and support for children with special educational needs, the provision for them is the responsibility of all staff and they are expected to make provision for the learning of all students within their lessons. We are focused on raising the aspirations of and expectations for all pupils with SEN, and we focus on outcomes for children and young people and not just hours of provision/support.

### **Range of Provisions**

As a school we have spent a lot of time training our teachers on how to best adapt their teaching to support SEND students so that they have quality first teaching every lesson. In addition, the SEND department provides LSA support in some lessons and runs a series of interventions. We use Provision Mapping software to track all of our interventions and their impact. Students on the SEN register have a keyworker who will be responsible for completing APDR's and updating student passports as required.



# 16. Student Hubs

We are lucky enough to have 2 dedicated student hubs that offer additional support to students and the school with;

1. Academic, social and mental health interventions
2. A safe space for some of our more vulnerable students
3. Reintegration work
4. Removal from circulation

There is one for Years 7, 8 and 9, and one for Years 10 & 11. During pastoral interventions and removal from circulation, students may be working in any of the year hubs.

# 17. Behaviour & Standards

Following feedback from students and staff we undertook a full review of our behaviour management system. We involved students and staff in developing the new plans and have outlined some of the changes below (full details can be found in our Expectations and Behaviour Policy via the school website and we would encourage you to have a look at this).

At the Stanway School, we employ a consequence system to deal with levels of misbehaviour or disruption to lessons. Students will still be given a reminder but we have replaced the 'reset' outside the class with a teacher intervention so that the needs of the student, teacher and class can be met better.

Consequence level in lessons	Points on Arbor
C0 - Informal warning & Information	0
C1 - Formal Warning	-1
C2 - Intervention to prevent further behaviour concerns	-2
C3 - Removal from lesson	-3
C4 - Removal from lessons for Dangerous Behaviour	-4

Following a removal from the classroom (C3), the student will have an hour's detention the following day. During this time, their teacher will have a restorative conversation with them to discuss what caused their removal from the classroom and to ensure a fresh start for the following lesson. Where

it is not possible for the staff member to meet with them, they will at the earliest opportunity before the next lesson.

All whole school after school detentions will now be one hour. Parents will usually be given 24 hours' notice, either by email or telephone if their child is required to attend an after school detention. Parental consent is not required for detentions. If a student fails to attend their detention, they will be automatically placed in a 90 minute detention with SLT the following school day. We appreciate that there are times when a student cannot make their detention day, e.g. due to medical appointments. We want to work with you and be as flexible as we can, we just ask that you contact the year team to discuss this so that we can set an alternative day as if we are not made aware and they do not attend the extended detention will be set.

## 18. Positive behaviour & Celebration

At the Stanway School, we want to recognise every success and firmly believe that giving rewards and awards raises self-esteem, motivation, and has a positive impact on learning. This may take the form of an encouraging word or a positive comment - such practice is extremely important and helps to create a warm, supportive atmosphere in which pupils thrive; over and above this informal encouragement there are certain formal systems:

### **Each Lesson**

**Achievement Points** - Used by staff on a day-to-day basis. If a pupil achieves something noteworthy in a lesson or homework task, e.g. excellence, improvement, learning etc., they will be awarded an Achievement Point. Staff are encouraged to let the pupil know either verbally or by recording on the piece of work that one has been awarded. It is expected that staff award at least three different students achievement points each lesson.

Pupils will receive rewards for passing certain thresholds (these will vary for each year group); a Bronze, Silver or Gold award will be given when a student reaches each threshold. These rewards will include communication home, queue jump passes, certificates, postcards and celebration lunches, with gold winners awarded the Stanway Achievement Badge.

### **Each Half Term**

**Celebration Rewards Assembly** - Led by the HOY, each half term ends with students being recognised for their successes; this will include individual and team successes in and out of school, as well as tutor group and house competitions for attendance and behaviour. Achievement points and subject awards given out with the real focus on recognising each achievement.

**Subject Awards** - Members of teaching staff nominate students in their classes who meet the different Stanway values. These students are recognised in assembly and students are invited to have a celebration lunch with Dominos pizza for a different value each half term.

**HOY/SLT - Celebration Registrations** - Students will be invited to attend positive registrations with the HOY or members of SLT to recognise different successes. This criteria will change through the year for different registrations which will include exemplary behaviour, improvement in progress, attendance or behaviour, representing the school and many other categories.

### **Each Term**

At the end of each term an activity or invitation is given to a number of different students who consistently demonstrate the stanway standard. This will include a rewards period at Christmas where students are invited to watch a Christmas film. At Easter students are invited for an extended break and receive free hot chocolate and chocolate treats. In the summer term students are invited

on an end of year trip which vary for different year groups, whilst year 7 go to Danbury Camp other year groups enjoy an Inflatable fun day, Southend Adventure Park and Thorpe Park.

**Headteacher's Commendations** - These are awarded termly to pupils on the basis that they have excelled in one way or another (e.g. attitude, improvement, attainment, research etc.) Certificates are presented by the Headteacher in an end of term assembly.

### Each Year

**Awards Evening** - The Stanway School Awards Evening is held at the end of each academic year to reward academic achievement and progress, as well as positive engagement with extra-curricular activities.

The Five strands of the Stanway Standard incorporate the following values:

**Considerate:** we are a community where each member is valued and success is celebrated

**Responsible:** we are each responsible for our words and actions towards each other and our environment

**Proud:** we are proud to be part of the Stanway community and take pride in the quality of our work, our achievements and our uniform;

**Respectful:** we treat every member of our community with the respect we wish to be shown to ourselves;

**Determined:** we show resilience through challenges and aspire to be the best we can be.

When our Students show commitment to the values of The Stanway Standard, they are awarded with our Stanway Standard Awards.



### The One Stripe Award

Typically Awarded to students in Year 7. Applications are also encouraged from students in the older Year groups and it is considered that ALL students will have an opportunity to achieve this Award. ***"Awarded to students who have clearly demonstrated the values of the Stanway Standard throughout their time at the school."***



### The Two Stripe Award

Typically Awarded during Year 8. ***"Awarded to students who have consistently demonstrated and promoted the values of the Stanway Standard both in the school and local community."***



### The Three Stripe Award

Typically Awarded during Year 9 and 10. ***"Awarded to students who have consistently demonstrated and promoted the values of the Stanway Standard both in the school and local community, whilst also acting as a leader amongst their peers."***

### Random Act of Kindness Shop (R.A.K)

At Stanway we actively encourage our students to be kind to others. This can be offering to help a member of staff carry books, waiting to hold a door open for someone, picking up litter to help keep the site clean, helping in a medical situation or supporting another student if they need help. The list is endless and kindness costs nothing but brings great reward. Our R.A.K shop is run by our student leadership team. Throughout the year students who demonstrate 'random acts of kindness' will

receive staff signatures in their pocket books. These can then be used like a loyalty card to trade in for rewards from our R.A.K shop. The more signatures they receive the more rewarding the prize.

## 19. Student Voice

We value student views and seek to include them in many areas of the school. Each half term, departments conduct student voice activities, these are in addition to the wholeschool surveys that take place. We have a proactive school council and student leadership team at Stanway and every student can feed their views, ideas or concerns via their form representatives or directly to the head student team, who will bring this to the attention of the school's senior leadership team. In the summer term, we have our Annual Student Conference. During these weeks, student voice activities take place across the school, with staff and with the Student Leadership Team who run the event. From this we have made significant changes over the last few years as our students have come up with some brilliant ideas of how to improve things.

The focus for 2021-22 was 'Sexual Harassment and Lessons', the 2022-23 theme was focused on 'Behaviour', and last year was 'Belonging'.

## 20. Student Leadership Years 7 to 11

During your time at the Stanway School you have the opportunity to apply for various leadership roles to make a real difference in the community. You are able to get involved as soon as you start at the school:

### Year 7

Each form group will appoint 1 form captain, 2 inter house captains, and 1 wellbeing monitor. The jobs of each of these students are as follows:

- **Form captain**
  - Appointed by form tutor and form
  - Roles include:
    - Attend year/school council meetings when scheduled.
    - Assist and support organisation of charity events.
    - Collect form folder each morning from student services.
- **Inter house captains**
  - Appointed by form tutor and form
  - Roles include:
    - Organise inter house teams with parallel inter house captains from other form.
      - Ensure full teams for every event.
      - Check teams in week leading up to and on day of event.
      - Deputise in teams if unforeseen circumstances lead to withdrawals.
- **Wellbeing monitor**
  - Appointed by form tutor and form
  - Roles include:

- Monitor student wellbeing and liaise with form tutors with any concerns.
- Model the 'two okay?'  
(<https://happiful.com/roman-kemp-our-silent-emergency/>)
- Be an advocate for mental health within the form and the school.

## **Year 8**

This is the first year that you will have the opportunity to apply for a whole school role. This is the first major step on your leadership journey. To become a Year 8 student leader you will need to submit an application form to your Head of Year and ensure you demonstrate behaviour in line with the Stanway Standard. Last year, Year 8 student leaders supported with the following roles:

1. Attended, supported and promoted Year 7 clubs.
2. Developed and put into place new ideas to help Year 6s move from primary school to Stanway School.
3. Supported with the promotion of rewards and awards across the school, including managing the Random Acts of Kindness shop and promoting the Jack Petchey Awards.
4. Supported with school events where necessary.
5. Embodied the Stanway Standard and modelled to peers and younger students.

## **Year 9**

This is the first opportunity to experience an interview like a job in the real world! To become a Year 9 Junior Prefect, you are required to submit an application to your Head of Year. Your Head of Year will then decide whether to interview you or not. If successful you will then be interviewed in a small group in front of 2 members of staff. It's great preparation for the future! Last year, Year 9 Junior Prefects supported with the following roles:

1. Acted as a Reading Champion for Year 7 students during form time.
  - a. Once per week, read with Year 7 students who needed support to improve their reading.
2. Became a peer mentor for a Year 7 student.
  - a. Underwent training with Mr Johnson & Mr MacPhail to learn how to be a peer mentor.
  - b. Peer mentored a Year 7 student if required.
3. Embodied the Stanway Standard and modelled to peers and younger students.
4. Supported with school events where necessary.
5. Line managed Year 8 student leaders.

## **Year 10**

The impact you can have on the school community expands even more as you hit Year 10. You are now given the opportunity to apply to be a Year 10 Prefect, and be part of a working group that plans and actions awesome ideas to make real change in the school. The application and interview process is similar to that of a Year 9 Junior Prefect, but a little more challenging to further develop your skills. Last year, Year 10 Prefects supported with the following roles:

1. Student welfare prefect:
  - a. Attended and supported with running of the Beehive.
  - b. Met regularly with key staff to discuss whole school personal development issues and develop/implement an action plan for key issues.
2. Student voice prefect:

- a. Ran the annual student voice conference to get views of a large group of students about our school.
  - b. Implemented actions from the student voice conference to improve our school.
  - c. Reviewed and adapted the current school council structure to make it more meaningful moving forward.
3. Community prefect:
    - a. Acted as student leaders for each House, supporting annual House competitions.
    - b. Worked with Mr Reedman/House Leaders to develop and sustain the House system and spirit.
  4. Sporting excellence prefect:
    - a. Supported with coaching of sports clubs for younger students.
    - b. Created & ran one health & fitness campaign or sporting charity event throughout the year.
  5. Academic excellence prefect:
    - a. Acted as a Reading Champion by reading once per week with Year 8 students who had low reading ages as identified by staff.
    - b. Developed ways to support English and Maths for students with gaps in knowledge and skills.

### **Head Student Team**

The last step on your leadership journey at the Stanway School is to apply to become a member of the Head Student Team. You have to be a Year 10 prefect who has demonstrated an immense commitment to the school, and someone who has a clear vision for improving a certain aspect of the school. Essentially, you will be the student face of the school - is this a challenge you'd love to have? Last year, the Head Student Team did the following roles:

1. Continued to complete assigned prefect duties as part of their working group.
2. Each student was assigned to support other aspects of the student leadership structure with key members of staff.
3. Wrote and monitored student school improvement plan (SSIP) and met with the Headteacher at least termly.
4. Attended school council meetings where required.
5. Supported the Headteacher with whole school events.
6. Embodied the Stanway Standard and modelled to prefect team, peers, and younger students.

### **The Year and School Council**

The Student Voice prefects, as well as last year's school council representatives, played a huge role in completely overhauling the School Council at the Stanway School.

In February 2024, we held our first ever School Council election campaigns, which led to the election of 2 School Council representatives for Year 8, Year 9 and Year 10. This was an awesome opportunity for the students involved, and a positive experience for the entire school community.

Form captains from each form group are required to attend a Year Council meeting every half term. The 6 elected school council representatives from Year 8, Year 9, and Year 10 visit forms or hold

whole school clinics to get agenda items to discuss. After discussion at the Year Council meeting, 2 agenda items are then taken forward to the School Council meeting that closely follows.

The School Council meetings have undergone a huge change. These take place every half term, and are representative of our whole school and local community. The School Council meeting includes:

- 2 form captains from Year 7 forms on a rolling, rotation basis.
- The 2 elected Year 8 School Council representatives.
- The 2 elected Year 9 School Council representatives.
- The 2 elected Year 10 School Council representatives.
- 2 members of the Head Student Team who chair and take minutes for the meeting.
- Mr MacPhail - Senior Progress Leader in charge of student leadership.
- One of the Executive Headteacher or Head of School.
- Another member of the staff senior leadership team.
- A community representative.
- A parent representative.
- A governor representative.

At the School Council meetings, the 2 brought-forward Year Council agenda items from each year group are discussed, as well as other whole school issues, and 1 agenda item from each of the external representatives.

The School Council last year already had a huge impact on the community by getting new water coolers for students, new TVs to display school news, offering money to prospective clubs for new resources and supporting with pastoral interventions, such as Boxercise clubs.

We hope that moving forward our School Council can have a long lasting, significant impact on our school and local community! We look forward to you getting involved!

## 21. How to contact us

At The Stanway School, we understand that it is your children; our students who will be the beneficiaries of a cooperative and trusting relationship between our staff and parents/carers. We fully abide by the values of our Stanway Standard – **Considerate, Determined, Proud, Respectful** and **Responsible** – as such, we ask that before you make contact with a member of staff that you are respectful during your meeting, conversation or email and considerate of the person receiving your communication.

To email a class teacher at The Stanway school, please use our standard formula:

forename.surname@stanway.school (For example, to contact Mr A Teacher, the email address would be:- [any.teacher@stanway.school](mailto:any.teacher@stanway.school))

We always try to work with parents and the vast majority of concerns, queries and complaints are resolved through the above channels of communication however if this does not happen then a

member of the Senior Leadership Team will seek to resolve the issue. There is a summary table below which may be useful in terms of whom to address concerns and complaints in what order:

Issue/Concern	Who to Contact
<ul style="list-style-type: none"> <li>- Concerns about a lesson</li> <li>- Learning in a subject</li> <li>- Pupil progress in a subject</li> </ul>	Subject teacher
<ul style="list-style-type: none"> <li>- Subject area Policy</li> <li>- Set changes</li> <li>- Exam specific questions</li> <li>- Persistent subject concerns</li> </ul>	Head of Department
<ul style="list-style-type: none"> <li>- Tutor group issues</li> <li>- Concerns about relationships</li> <li>- Uniform</li> </ul>	Form Tutor
<ul style="list-style-type: none"> <li>- Persistent Absence</li> <li>- Concerns at home</li> <li>- Persistent concerns outside of lessons</li> </ul>	Head of Year
<ul style="list-style-type: none"> <li>- SEN support or inclusion</li> <li>- One plans and EHCPs</li> </ul>	SENCO
<ul style="list-style-type: none"> <li>- Lunch Cards</li> <li>- Bus Passes</li> <li>- ParentPay Accounts</li> <li>- Free School Meals</li> <li>- Attendance concerns</li> <li>- Lost property</li> </ul>	Student Services

To report forms of bullying, racial, sexual, religious or any other type of intolerance or concern, please fill in the form linked [here](#).

## 22. Summary

We always try to work with parents and the vast majority of concerns, queries and complaints are resolved through the above channels of communication however if this does not happen then a member of the Senior Leadership Team will seek to resolve the issue.

We hope you and your child have a fantastic start to the school year, but if there are any questions that you still have, please get in contact with us.

Jonathan Bland



Executive Headteacher

John Player



Head of School



## Home-School Partnership Agreement 2024-25

The Stanway School is a community in which every student matters. Students respond to our high academic, cultural and sporting expectations. We recognise and celebrate success wherever it occurs: in the classroom; on the pitch; in the studio; or in contributions to the wider community. Since 2016, schools aren't required to have a home-school agreement but we want to enter into a partnership with parents and students to ensure that every student feels part of our community and makes the most of their time with us.

Together, the staff and students formed the 5 elements of the Stanway Standard that run through and underpin all that we do and say in our school community. At The Stanway School, we are: Respectful, Proud, Responsible, Determined and Considerate.

Our Home-School Partnership is based on these principles, and all parties agree to uphold these in order that through our high expectations and high quality teaching by excellent, professional staff, each student has the opportunity to enjoy their learning and achieve their personal best.

### **As a School we will endeavour to meet the Stanway Standard in the following ways:**

#### **Respectful**

- We will provide a warm welcome when parents/guardians/carers visit the school and the opportunity to contact staff when the need arises, responding to emails within 48 hours (2 working days).
- We will provide and monitor systems for safe ICT usage as described in the Acceptable Use policy.

#### **Proud**

- We will provide a wide choice of opportunities and activities within and beyond the classroom.
- We will place an emphasis on the importance of students attending school every day, being punctual, wearing full school uniform and being prepared with the necessary books and equipment.

#### **Responsible**

- We will provide a broad and balanced curriculum, supported by regular homework tasks; where appropriate, work is set and marked in line with our Feedback Policy, and other forms of feedback such as self-review, peer assessment, verbal feedback and whole class feedback will be applied when deemed appropriate by the teacher.
- We will provide an education based on high expectation, equality of opportunity, high standards of teaching, academic support and individual guidance.
- We will provide parents with regular information on school events and news.

#### **Determined**

- We will take actions to work towards eliminating any unlawful discrimination, harassment or victimisation.
- We will provide provide opportunities during each school year for parents/guardians/carers to:
  - be involved in important decision-making procedures which affect their child's progress throughout school;
  - be issued with an interim report to show their child's progress each term;
  - be able to discuss their child's progress with school staff;
  - be provided with regular updates about your child's progress.

#### **Considerate:**

- We provide support for the individual student through the school's pastoral system.

#### **Signed on behalf of the school:**

Mr J Bland, Executive Headteacher



#### **Signed on behalf of the school:**

Mr J Player, Head of School



**As the Local Governing Council we will endeavour to meet the Stanway Standard in the following ways.**

- seek financial efficiency and value for money;
- draw up and establish a full set of school policies;
- ensure compliance with statutory obligations, including health and safety regulations;
- monitor and review all aspects of the school's work.

**Signed on behalf of the LGC:**  
Mr S Whitfield, Chair of LGC



**As parents/guardians/carers we will endeavour to meet the Stanway Standard in the following ways.**

**We are Respectful**

- I/We will support the school's policies, including codes of behaviour, school rules and consequences;
- I/We will communicate politely and respectfully to school staff in writing, on the telephone or in person. I/We understand that I should communicate with staff during core school hours, and although they may at times respond outside of those hours, I can't always expect that.

**Proud**

- I/We will ensure that our child attends school every day on time, with the necessary equipment and wearing a full school uniform.

**Responsible**

- I/We will inform the school immediately of any changes to personal contact details.
- I/We will actively support the school's homework policy by making sure homework set is completed and handed in on time;
- I/We will inform the school of absence on the first day, followed by a letter on the day of return if absence is for more than one day;
- I/We will check the Arbor app to support with homework
- I/We will attend parents' evenings and meetings relevant to our child's work, progress and relationships in school and support school functions;
- I/We will not take family holidays during term time as well as medical or dental checks unless emergent or as part of ongoing medical treatment).
- I/We will support the school to make sure my child maintains a consistently high standard of behaviour, and support the school's reward and consequences processes.

**Determined**

- I/We will encourage our child to work to his/her full potential at all times and to participate in the school's extra – curricular activities.

**Considerate**

- I/We will advise the Form Tutor about anything which might affect our child's work or well-being in school;
- I/We will support the school's approach to on-line safety and not deliberately upload or add any images, sounds or text that could upset or offend any member of the school community.

## **As a student I will endeavour to meet the Stanway Standard in the following ways.**

### **Respectful**

- I will treat all members of the school community and any visitors with respect and understanding, regardless of their background, role in the school or differences of opinion.
- I will follow the rules relating to the school computer network;
- I will share responsibility for the school environment and treat shared spaces, classrooms and corridors with respect.
- I will support the school's approach to on-line safety and not deliberately upload or add any images, sounds or text that could upset or offend any member of the school community;

### **Responsible**

- I will attend school regularly;
- I will be punctual at all times, arriving at school **for** 8:35am and to all lessons on time;
- I will come to school with the right books and equipment;
- I will be responsible for my own behaviour and follow school rules;
- I will behave in a responsible way on school visits and when travelling to and from school.
- I will accept **consequences** issued through the published Consequences system if my behaviour does not meet the Stanway Standard.

### **Proud**

- I will wear a full school uniform to represent my school proudly. Whilst in the community and wearing my uniform, I will behave in a way the school can be proud of.
- I will ensure all homework details are clearly written down and that all homework is completed on time. Homework will be completed to the best of my ability.

### **Determined**

- I will work hard and meet all course requirements on time.
- I will listen in lesson and undertake all tasks issued to me by teachers, learning support staff or my form tutor to the best of my ability.
- I will ask questions when I am unsure in class and respond to feedback proactively.

### **Considerate**

- I will let a member of staff or someone know if I have any worries.
- I will be kind to all members of the school community: peers, teachers, support staff, caterers, site staff, governors, visitors and guests.
- I will speak to an adult about any concerns I have about my or other pupils' safety.